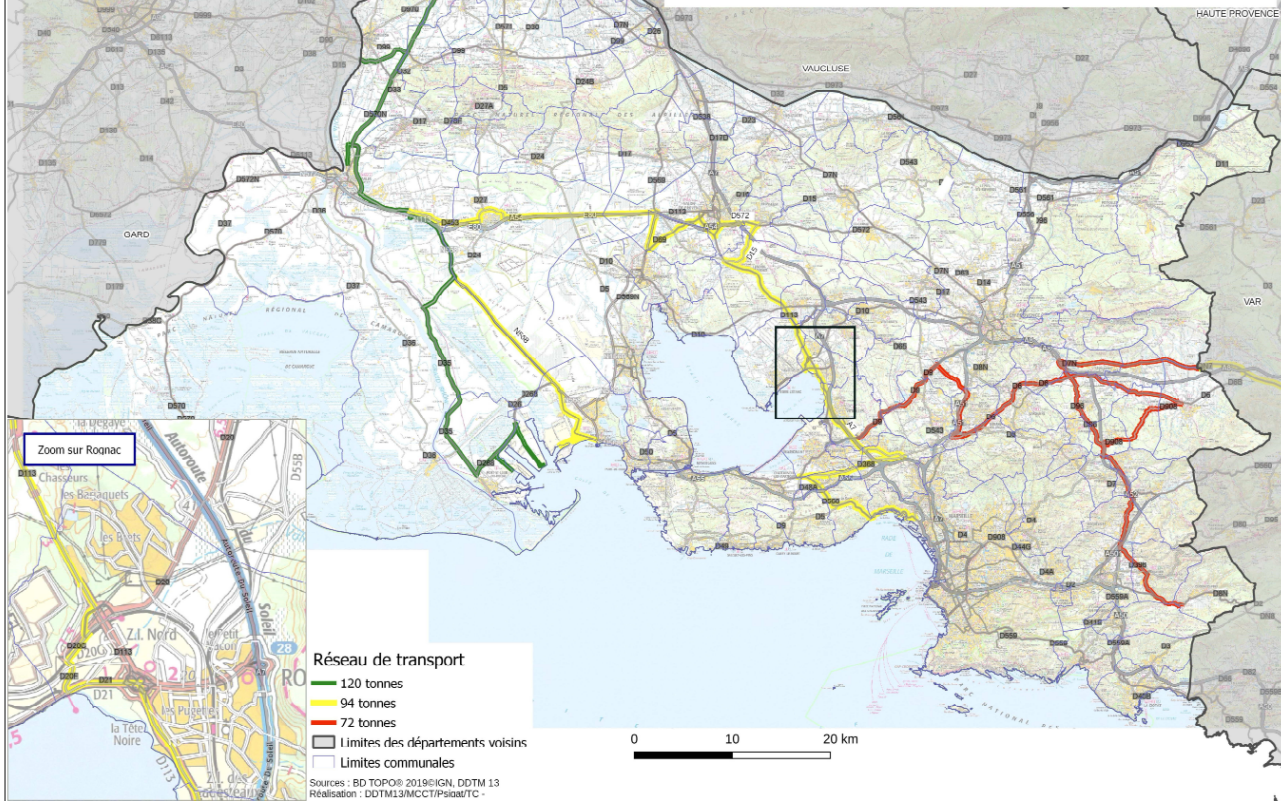


Annexe 1

Itinéraires ouverts à la simplification des transports exceptionnels dans les Bouches-du-Rhône



ANNEXE 2 – Liste des tronçons routiers ouverts à la simplification des transports exceptionnels dans les Bouches-du-Rhône - 2020

Tonnage	voie	Gestionnaire	Début	Fin	Prescriptions particulières
120 T	N1007	DIRMED	Limite Vaucluse	intersection N1007/D570n	PP 01 - DIRMED
	D570n	Conseil Départemental 13 (CD13)	intersection N1007/D570n	intersection D570n/D453	
	D453	CD 13	intersection D570n/D453	intersection D453/D83d	
	D83d	CD 13	intersection D453/D83d	intersection D83d/D113a	PP 02 – CD13
	D113a	CD 13	intersection D83d/D113a	intersection D113a/N568	
	N568	DIRMED	intersection D113a/N568	intersection N568/D24	PP 03+04+05 - DIRMED
	D24	CD 13	intersection N568/D24	intersection D24/D35	PP 06 – CD13
	D35	CD 13	intersection D24/D35	intersection D35/D268	PP 07 – CD13
	D268	CD 13	intersection D268/D35	intersection D268/P541	PP 08 – CD13
	P535	GPMM	intersection D268/P535	Port de Marseille-Fos	
	P541	GPMM	intersection D268/P541	terminal minéralier	
	D35	CD 13	intersection D570n/D35	intersection D35/Draille du mas Mollin	
	Rue Copernic	Commune d'Arles	intersection D35/Rue Copernic	accès CMP	
	D99b	CD 13	limite Gard	intersection D99/D99b	PP 09 – CD13
D99	CD 13	intersection D99/D99b	intersection D570n/D99		
94 T	D453	CD 13	intersection D33/D453	intersection D453/ Av de la République	PP 10 – CD13
	Av de la République	Commune de St Martin de Crau	intersection D453/ Av de la République	intersection Av de la République/D24	
	D24	CD 13	intersection Av de la République/D24	intersection D24/D24e	
	D24e	CD 13	intersection D24/D24e	intersection D24e/D113	
	D113	CD 13	intersection D24e/D113	intersection D113/N569	
	N569	DIRMED	intersection D113/N569	intersection N569/D69	PP 11+12 – DIRMED et PP 13 – ASF
	D69	CD 13	intersection N569/D69	intersection D69/D113	PP 14 – ASF
	D113	CD 13	intersection D69/D113	intersection D113/D538	PP 15 – ASF
	D538	CD 13	intersection D113/D538	intersection D538/D572	
	D572	CD 13	intersection D538/D572	intersection D572/D15	PP 16 – CD 13
	D15	CD 13	intersection D572/D15	intersection D15/D19d	PP 17 – ASF et PP 18 – CD13
	D19d	CD 13	intersection D15/D19d	intersection D113/D19d	
	D113	CD 13	intersection D113/D19d	intersection D113/D20f	
	D20f	CD 13	intersection D113/D20f	intersection D20f/D20c	
	D20c	CD 13	intersection D20f/D20c	intersection D20c/D20f	PP 20 – CD 13
	D20f	CD 13	intersection D20c/D20f	intersection D20f/D21	
	D21	CD 13	intersection D20f/D21	intersection D21/D113	
	D113	CD 13	intersection D21/D113	intersection D113/A7	
	A7	DIRMED	échangeur D113/A7	échangeur A7/D113	PP 21 - DIRMED
	D113	CD 13	échangeur A7/D113	intersection D113/D368	PP 22+23 – CD13
D368	CD 13	intersection D113/D368	intersection D368/D568	PP 24 – CD 13	
D568	CD 13	intersection D368/D568	Accès Port de Marseille porte 5	PP 25 – CD13 et PP 26 - MAMP	
N568	DIRMED	intersection D24/N568	intersection N568/N544	PP 27+28+29 – DIRMED	
P544	GPMM	intersection N568/N544	Site ARCELOR MITTAL		
72 T	D9	CD 13	échangeur A7/D9	intersection D9/D59	PP 30 – CD 13
	D59	CD 13	intersection D9/D59	intersection D59/D8n	
	D8n	CD 13	intersection D59/D8n	intersection D8n/D6	
	D6	CD 13	intersection D8n/D6	intersection D6/D6c	
	D6c	CD 13	intersection D6/D6c	intersection D6c/D96	
	D6	CD 13	intersection D6/D6c	intersection D6/D46	PP 31 – CD 13
	D6	CD 13	intersection D46/D6	intersection D6/D6c	
	D6c	CD 13	intersection D6/D6c	intersection D6c/D96	
	D96	CD 13	intersection D6c/D96	intersection D96/D7n	
	D7n	CD 13	intersection D7n/D96	limite Var	
	D6	CD 13	intersection D6c/D6	intersection D6/D908a	
	D908a	CD 13	intersection D6/D908a	intersection D908a/D908	
	D908	CD 13	intersection D908a/D908	intersection D908/D96	
	D96	CD 13	intersection D6c/D96	intersection D96/D396	PP 32 – CD 13
	D396	CD 13	intersection D96/D396	intersection D396/RD8n	
D8n	CD 13	intersection D396/RD8n	intersection D8n/D1	PP 34 – CD 13	